

# The Wavy One

---

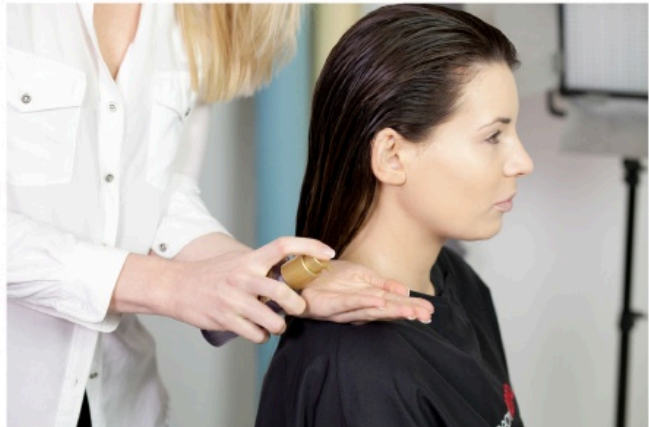
## Step 1

Blot the hair to 30% dry. This is done by squeezing the hair with a towel to absorb the moisture.



## Step 2

Apply a foundation product to even the cuticle and smooth the hair.



## Step 3

Apply a medium hold mousse to the roots, using a painting technique with your hands. Tip: The mousse is only needed near the roots. The ends are more porous so require less product. Work in 2 inch sections to evenly apply product to all of the root area.



# The Wavy One

---

## Step 4

Use a lighter hold spray for the ends. This product will help manipulate the hair into a long lasting style.

Tip: Exact holding product will depend on individual hair. Work in 2 inch sections and apply thoroughly throughout the mid lengths and ends.



## Step 5

Dry the hair to about 70% dry. Use fingers to add any extra root lift.

Do not rough the hair as this makes the blow-dry harder to achieve.



## Step 6

Take large three inch sections and smooth with a medium to large round brush. Dry the hair completely.



# The Wavy One

---

## Step 7

Once the cuticle is smooth, take large 2 inch sections and spray with a light hold hairspray.



## Step 8

Use a large barrel tong or GHDs to create a wave effect.

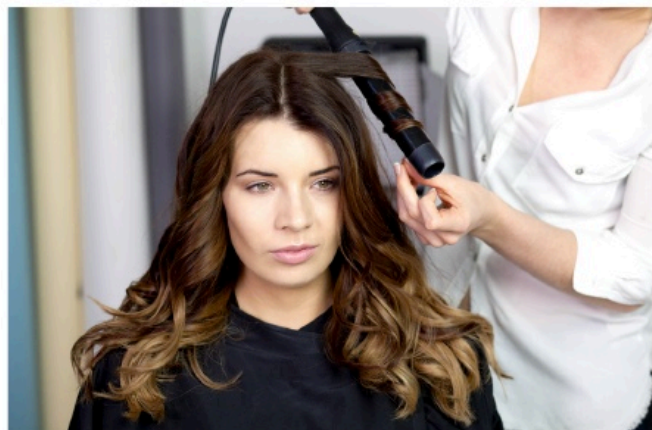
Use a relaxed tension to create a soft effect.



## Step 9

Take random sizes and directions to keep the effect tousled.

The front sections should be waved away from the face.





# The Wavy One

---

